

Installation Guide

What you will need:



1 or 2 people



Step ladder



Sharp blade



Straight edge level

Warning Notice

Wall Preparation / Installation

Follow our guide. Failure to do so will result in your wallpaper not sticking correctly. Bold prints / Custom Wallpaper will NOT take responsibility if it fails to stick.

Avoid All Wash & Wear Paints any paint with Teflon or similar additives premium paints or Matt / Flat paints.

Call us for any further advice. If you are uncertain what your wall is painted with WE RECOMMEND Viponds wall prep.

Check:

Each Wallpaper Panel is numbered to ensure they are in the correct order before beginning so that you start the correct 1st Panel on your wall. An A4 proof with panel numbers is provided with your order. Each print (panel) has a number applied to the back of the print.

Wall Preparation / installation

Please avoid the following paint finishes when installing your wallpaper:

– Flat or matte finishes, Premium paints Wash & Wear Paints, Paints containing Teflon, chlorinated waxes and silicones – Heavily textured paints – Oil alkyd primers and enamels.

If you are uncertain of the paint used, you should undercoat with Viponds Self Adhesive Prep Coat.

Before you install your Wallpaper you MUST

Using the test sample supplied apply to the wall to ensure the wallpaper will adhere. The sample should stick to the surface with reasonable tack whilst still being able to be peeled off without damage to the wall.

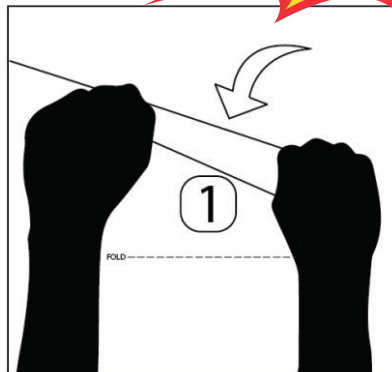
If you are unsure, leave the sample applied to the wall overnight and check to see if it is still applied in the morning.

If the sample does not feel like it is sticking to the wall or the sample edges are peeling please ensure that the Wall Preparation / Installation has been followed correctly.

Start from the left

PRIOR TO STEP 1 OF YOUR INSTALLATION: ENSURE YOU HAVE FOLLOWED OUR WALL PREPARATION GUIDE

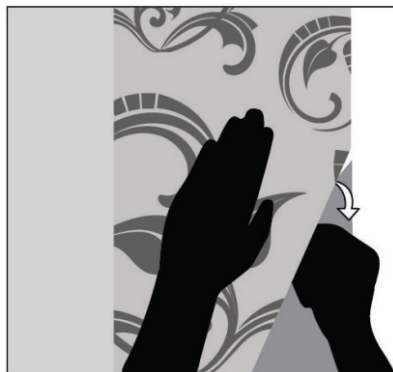
Step 1 Start from the left with wallpaper panel indicated number "1" on reverse, and then install sequentially as per your labelled wallpaper panels.



Step 2 Please take your time. It's essential that Panel 1 is positioned correctly as this is your guide for the remainder of your wall. If adjoining another wall or doorway you may need to slightly overhang panel 1 on the left side and trim later if the walls/door are not perfectly square.

Sticking the wallpaper

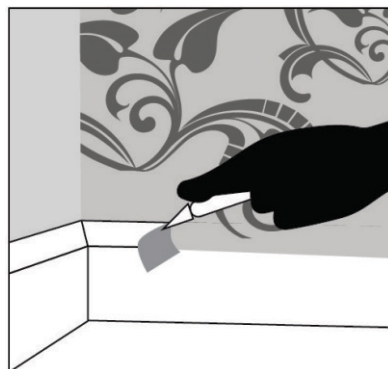
Step 4 Remove the backing sheet. Partly peel the backing sheet off on the floor but don't remove it all, place it on the wall and then slowly and evenly keep peeling the backing sheet away from the panel whilst you continually smooth it onto the wall with your hands.



Step 5 Wrinkles & Bubbles. All bubbles and wrinkles should just rub out by applying little pressure, you may damage the print by applying too much pressure. If you cannot remove them you may have to slowly remove the effected area and re apply.

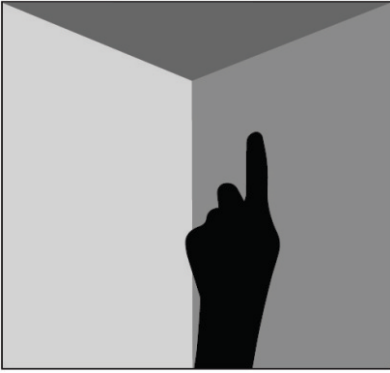
Step 7 Trimming Trim any excess print with a sharp knife. You should have approx 25mm at base and on the end panel.

ONLY TRIM ONCE ALL PANELS HAVE BEEN INSTALLED.



Step 8 When trimming around light switches it is important to **TURN YOUR MAIN POWER OFF!**

Prepare to stick - Panel 1



3 Line up your custom wallpaper's top edge with your ceiling or cornice. Ensure the wallpaper is square and use your hands to smooth it onto the wall. If you need to butt the panel into another wall use the vertical left hand edge as your square. If this doesn't work allow the panel to overhang the left hand edge, as



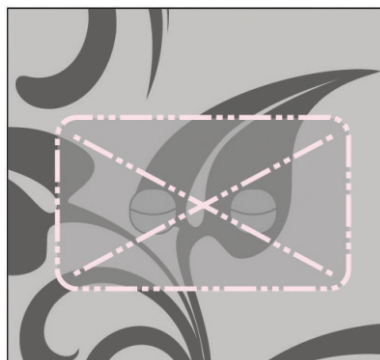
Step 6 Additional Panels.
All additional panels are to be applied as per Panel 1, Each panel has approximately 25mm overlap to allow for easier match up and alignment when installing.



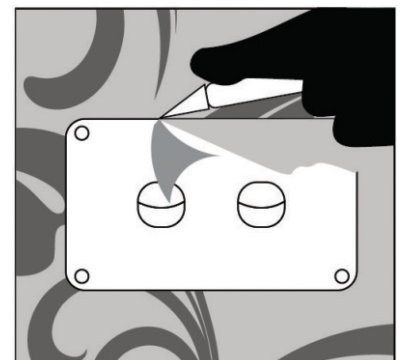
Tips for trimming around light switches, power points etc.



First remove the light switch cover then firmly smooth the wallpaper and crease over the top of the switch



Create a cross cut over the centre of the switch. Extend the incision to the inside edge of the switch, seal the wallpaper to the edge.



Carefully trim the additional wallpaper around the switch

Maintenance:

Your wall mural shouldn't require any ongoing maintenance but can be wiped gently with a warm damp cloth. If any bubbles appear just gently rub them downwards. If they persist, gently peel the panel back up and smooth it back down with your hands.

Removal:

If you would like to remove your wall mural simply start with the last panel installed and slowly pull it downwards away from the wall, starting at the top edge. Try to keep the panel as flat and parallel to the wall as possible to avoid any damage to either the wall or the panel.

Top Tips:

- Make sure to hang the paper in the **correct order** as per the panel numbers.
- Check designs prior to hanging, to ensure you hang them all the **right way** and in the **right direction**
- Ensure your scissors and/or knife are sharp and **free from paste and any residue**, this allows for straight and neat cuts.
- If you have to wallpaper around light switches it is advisable and easier to **cover the switch with the wallpaper** and then **cut diagonally over the switch** and around it with a sharp knife.
- Only apply to smooth walls that have been **Sealed, Primed & Painted**, preferred **Viponds Self Adhesive Prep Coat** or semi-gloss to gloss finish
- **Avoid** using any **Premium Paints / Wash & Wear Paints** or **Mark Resistant Paints** (teflon additive) See wall preparation / Installation section for more information.



Email us a photo of your amazing finished wallpaper at hello@boldprints.com.au to receive a **10% DISCOUNT off *your next Custom Wallpaper online order!**

***Can also be given to family or friends.**

Refunds are also not valid for having the incorrect wall surface or paint (teflon or suede effects, satin finish) CW products unfortunately does not apply to these types of paint or porous surfaces. You can seal you wall first with the correct paint (semi gloss) or wallprep undercoat product as per or Wall Prep recommendations.